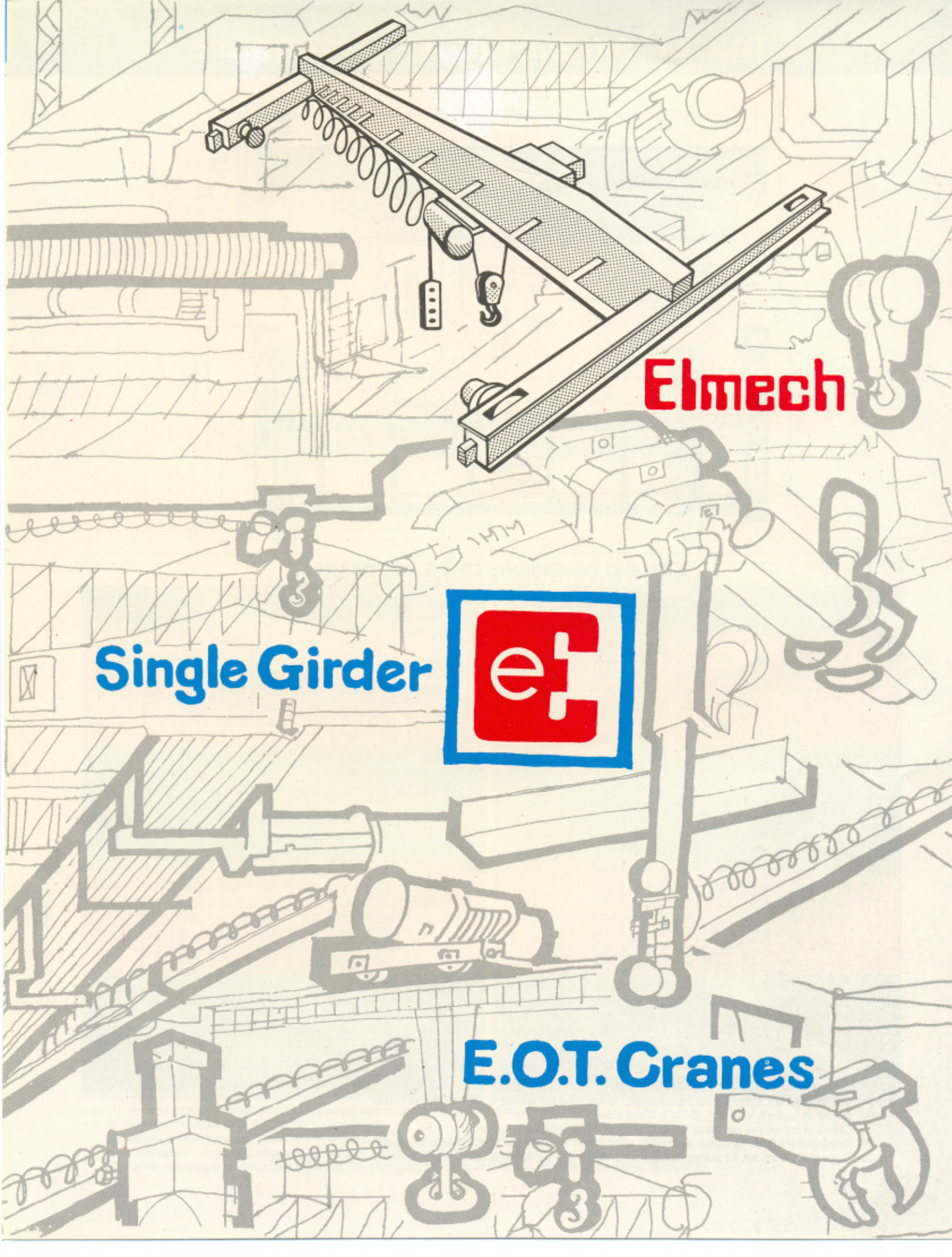


Elmech

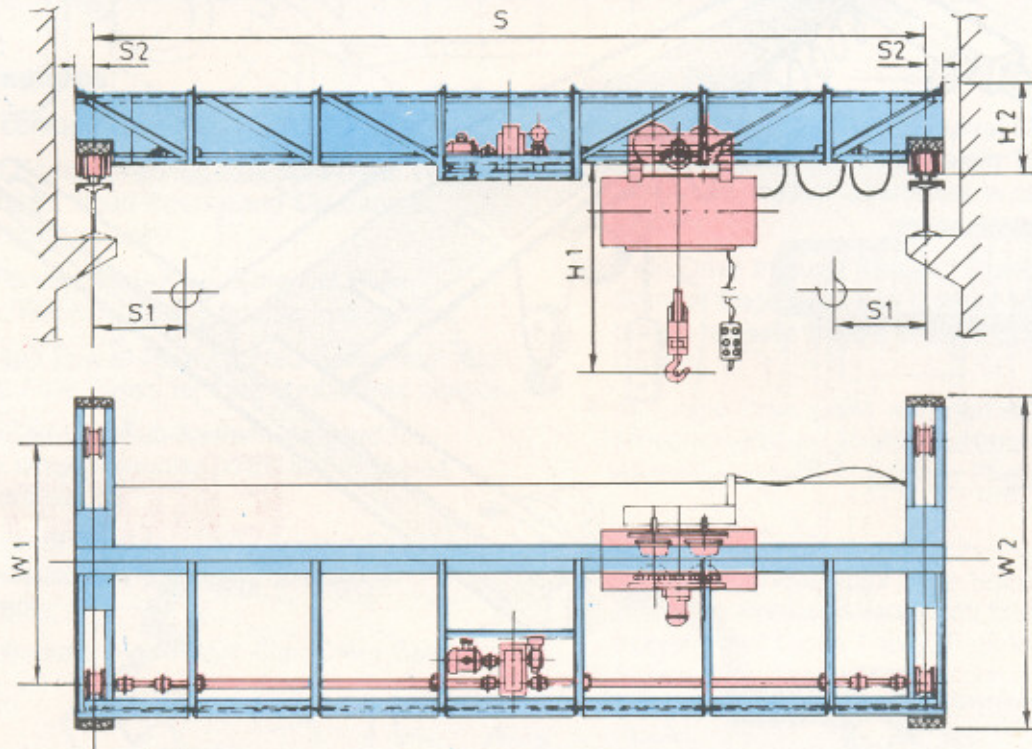
Single Girder



E.O.T. Cranes



Elmech SINGLE GIRDER EOT CRANES



LEADING DIMENSIONS OF S.G.EOT CRANES

| SWL | Span | H1 | H2 | S1 | S2 | W1 | W2 | Cm.Wt | W.Load | SWL | Span | H1 | H2 | S1 | S2 | W1 | W2 | Cm.Wt | W.Load |
|-------|------|------|------|-----|------|------|------|-------|--------|-------|------|------|------|------|------|-------|------|-------|--------|
| MT | M | mm | | | | | | MT | | MT | M | mm | | | | | | MT | |
| 00.50 | 06 | 900 | 450 | 600 | 200 | 2000 | 2600 | 1.10 | 0.50 | 01.00 | 06 | 900 | 550 | 600 | 200 | 2000 | 2600 | 1.40 | 0.85 |
| | 08 | 900 | 450 | 600 | 200 | 2000 | 2600 | 1.78 | 0.67 | | 08 | 900 | 550 | 600 | 200 | 2000 | 2600 | 1.93 | 0.96 |
| | 10 | 900 | 550 | 600 | 200 | 2000 | 2600 | 2.24 | 0.76 | | 10 | 900 | 550 | 600 | 200 | 2000 | 2600 | 2.24 | 1.01 |
| | 12 | 900 | 550 | 600 | 200 | 2400 | 3000 | 2.60 | 0.83 | | 12 | 900 | 650 | 600 | 200 | 2400 | 3000 | 2.79 | 1.14 |
| | 14 | 900 | 550 | 600 | 200 | 2800 | 3400 | 2.97 | 0.90 | | 14 | 900 | 650 | 600 | 200 | 2800 | 3400 | 3.20 | 1.21 |
| | 16 | 900 | 650 | 600 | 200 | 3200 | 3800 | 3.47 | 1.13 | | 16 | 900 | 700 | 600 | 200 | 3200 | 3800 | 3.47 | 1.38 |
| 18 | 900 | 650 | 600 | 200 | 3600 | 4200 | 3.81 | 1.20 | 18 | 900 | 700 | 600 | 200 | 3600 | 4200 | 4.72 | 1.67 | | |
| 02.00 | 06 | 1000 | 550 | 700 | 200 | 2000 | 2600 | 1.70 | 1.40 | 03.00 | 06 | 1150 | 650 | 800 | 200 | 2000 | 2600 | 2.40 | 1.95 |
| | 08 | 1000 | 550 | 700 | 200 | 2000 | 2600 | 2.01 | 1.52 | | 08 | 1150 | 650 | 800 | 200 | 2000 | 2600 | 2.66 | 2.28 |
| | 10 | 1000 | 650 | 700 | 200 | 2000 | 2600 | 2.50 | 1.61 | | 10 | 1150 | 650 | 800 | 200 | 2000 | 2600 | 3.00 | 2.34 |
| | 12 | 1000 | 650 | 700 | 200 | 2400 | 3000 | 2.88 | 1.69 | | 12 | 1150 | 700 | 800 | 200 | 2400 | 3000 | 4.03 | 2.56 |
| | 14 | 1000 | 800 | 700 | 200 | 2800 | 3400 | 3.99 | 1.93 | | 14 | 1150 | 800 | 800 | 200 | 2800 | 3400 | 4.54 | 2.67 |
| | 16 | 1000 | 800 | 700 | 200 | 3200 | 3800 | 4.37 | 2.13 | | 16 | 1150 | 800 | 800 | 200 | 3200 | 3800 | 4.92 | 2.86 |
| 18 | 1000 | 800 | 700 | 200 | 3600 | 4200 | 4.80 | 2.22 | 18 | 1150 | 850 | 800 | 200 | 3600 | 4200 | 6.02 | 3.12 | | |
| 05.00 | 06 | 1150 | 800 | 800 | 200 | 2000 | 2600 | 2.90 | 2.85 | 07.50 | 06 | 1450 | 750 | 950 | 200 | 2600 | 3200 | 3.50 | 4.85 |
| | 08 | 1150 | 800 | 800 | 200 | 2000 | 2600 | 3.14 | 3.42 | | 08 | 1450 | 750 | 950 | 200 | 2600 | 3200 | 3.98 | 5.05 |
| | 10 | 1150 | 800 | 800 | 200 | 2000 | 2600 | 3.59 | 3.52 | | 10 | 1450 | 900 | 950 | 200 | 2600 | 3200 | 4.84 | 5.24 |
| | 12 | 1150 | 750 | 800 | 200 | 2400 | 3000 | 4.04 | 3.61 | | 12 | 1450 | 900 | 950 | 200 | 2600 | 3200 | 5.62 | 5.40 |
| | 14 | 1150 | 850 | 800 | 200 | 2800 | 3400 | 5.10 | 3.83 | | 14 | 1450 | 900 | 950 | 200 | 2800 | 3400 | 6.28 | 5.55 |
| | 16 | 1150 | 900 | 800 | 200 | 3200 | 3800 | 5.56 | 4.05 | | 16 | 1450 | 1000 | 950 | 200 | 3200 | 3800 | 7.43 | 5.91 |
| 18 | 1150 | 900 | 800 | 200 | 3600 | 4200 | 6.72 | 4.33 | 18 | 1450 | 1000 | 950 | 200 | 3600 | 4200 | 8.69 | 6.21 | | |
| 10.00 | 06 | 1450 | 900 | 950 | 200 | 2600 | 3200 | 4.00 | 6.40 | 12.50 | 06 | 1700 | 1000 | 1000 | 200 | 3000 | 3600 | 4.40 | 7.44 |
| | 08 | 1450 | 900 | 950 | 200 | 2600 | 3200 | 4.60 | 6.52 | | 08 | 1700 | 1000 | 1000 | 200 | 3000 | 3600 | 4.80 | 7.84 |
| | 10 | 1450 | 900 | 950 | 200 | 2600 | 3200 | 5.29 | 6.66 | | 10 | 1700 | 1000 | 1000 | 200 | 3000 | 3600 | 5.96 | 8.11 |
| | 12 | 1450 | 900 | 950 | 200 | 2600 | 3200 | 6.05 | 6.83 | | 12 | 1700 | 1200 | 1000 | 200 | 3000 | 3600 | 7.17 | 8.36 |
| | 14 | 1450 | 1100 | 950 | 200 | 2800 | 3400 | 7.56 | 7.17 | | 14 | 1700 | 1500 | 1000 | 200 | 3000 | 3600 | 9.00 | 8.78 |
| | 16 | 1450 | 1100 | 950 | 200 | 3200 | 3800 | 8.38 | 7.44 | | 16 | 1700 | 1500 | 1000 | 200 | 3200 | 3800 | 10.02 | 9.12 |
| 18 | 1450 | 1100 | 950 | 200 | 3600 | 4200 | 9.23 | 7.67 | 18 | 1700 | 1500 | 1000 | 200 | 3800 | 4200 | 11.44 | 9.45 | | |

Note:01. Due to continuous technological improvements, dimensions are subject to change without notice.

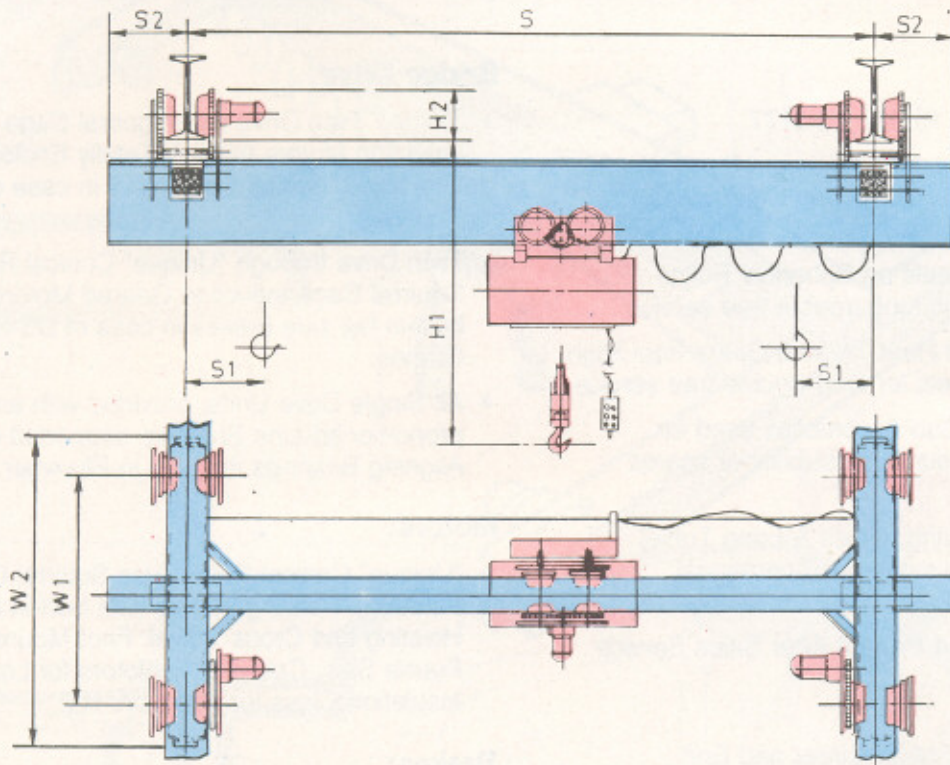
02. All cranes conform to IS 807, IS 3177, Class 2 duty.

03. Details of cranes as per Class 3 and 4 duties could be supplied on request.

04. Dimension H1 could be further reduced by using "Short Head Room Hoists", details on request.

05. Above dimensions are for cranes having 6m lift. There may be minor variations in dimensions for higher height of lift.

Elmech UNDER-SLUNG SINGLE GIRDER EOT CRANES



LEADING DIMENSIONS OF U/S S.G. EOT CRANES

| SWL | Span | H1 | H2 | S1 | S2 | W1 | W2 | Crn.Wt | W.Load | SWL | Span | H1 | H2 | S1 | S2 | W1 | W2 | Crn.Wt | W.Load |
|-------|------|------|-----|-----|-----|------|------|--------|--------|-------|------|------|-----|-----|-----|------|------|--------|--------|
| MT | M | mm | | | | | | MT | | MT | M | mm | | | | | | MT | |
| 00.50 | 06 | 1200 | 110 | 400 | 200 | 1200 | 1600 | 1.40 | 0.40 | 01.00 | 06 | 1300 | 110 | 400 | 200 | 2000 | 1600 | 1.40 | 0.85 |
| | 08 | 1200 | 110 | 400 | 200 | 1600 | 2000 | 1.65 | 0.64 | | 08 | 1300 | 110 | 400 | 200 | 1600 | 2000 | 1.79 | 0.93 |
| | 10 | 1300 | 110 | 400 | 200 | 2000 | 2400 | 2.05 | 0.74 | | 10 | 1300 | 110 | 400 | 200 | 2000 | 2400 | 2.05 | 0.98 |
| | 12 | 1300 | 110 | 400 | 200 | 2400 | 2800 | 2.33 | 0.80 | | 12 | 1400 | 110 | 400 | 200 | 2400 | 2800 | 2.53 | 1.11 |
| | 14 | 1300 | 110 | 400 | 200 | 2800 | 3200 | 2.64 | 0.86 | | 14 | 1400 | 110 | 400 | 200 | 2800 | 3200 | 2.87 | 1.19 |
| | 16 | 1400 | 110 | 400 | 200 | 3200 | 3600 | 3.20 | 1.00 | | 16 | 1400 | 110 | 400 | 200 | 3200 | 3600 | 3.20 | 1.25 |
| | 18 | 1400 | 110 | 400 | 200 | 3600 | 4000 | 3.54 | 1.09 | | 18 | 1500 | 110 | 400 | 200 | 3600 | 4000 | 4.44 | 1.56 |
| 02.00 | 06 | 1400 | 110 | 500 | 200 | 1200 | 1600 | 1.70 | 1.40 | 03.00 | 06 | 1650 | 110 | 700 | 200 | 1200 | 1600 | 2.40 | 1.95 |
| | 08 | 1400 | 110 | 500 | 200 | 1600 | 2000 | 1.88 | 1.48 | | 08 | 1650 | 110 | 700 | 200 | 1600 | 2000 | 2.53 | 2.26 |
| | 10 | 1500 | 110 | 500 | 200 | 2000 | 2400 | 2.30 | 1.58 | | 10 | 1650 | 110 | 700 | 200 | 2000 | 2400 | 2.82 | 2.32 |
| | 12 | 1500 | 110 | 500 | 200 | 2400 | 2800 | 2.62 | 1.66 | | 12 | 1750 | 110 | 700 | 200 | 2400 | 2800 | 3.76 | 2.52 |
| | 14 | 1600 | 110 | 500 | 200 | 2800 | 3200 | 3.66 | 1.91 | | 14 | 1750 | 110 | 700 | 200 | 2800 | 3200 | 4.21 | 2.64 |
| | 16 | 1600 | 110 | 500 | 200 | 3200 | 3600 | 4.10 | 2.00 | | 16 | 1750 | 110 | 700 | 200 | 3200 | 3600 | 4.66 | 2.75 |
| | 18 | 1600 | 110 | 500 | 200 | 3600 | 4000 | 4.53 | 2.11 | | 18 | 1800 | 110 | 700 | 200 | 3600 | 4000 | 5.75 | 2.99 |
| 05.00 | 06 | 1750 | 110 | 700 | 200 | 1200 | 1600 | 2.90 | 2.85 | 07.50 | 06 | 2000 | 110 | 850 | 200 | 1200 | 1600 | 3.50 | 4.85 |
| | 08 | 1750 | 110 | 700 | 200 | 1600 | 2000 | 3.00 | 3.40 | | 08 | 2000 | 110 | 850 | 200 | 1600 | 2000 | 3.85 | 5.02 |
| | 10 | 1750 | 110 | 700 | 200 | 2000 | 2400 | 3.39 | 3.49 | | 10 | 2100 | 110 | 850 | 200 | 2000 | 2400 | 4.60 | 5.19 |
| | 12 | 1750 | 110 | 700 | 200 | 2400 | 2800 | 3.77 | 3.57 | | 12 | 2100 | 110 | 850 | 200 | 2400 | 2800 | 5.31 | 5.37 |
| | 14 | 1800 | 110 | 700 | 200 | 2800 | 3200 | 4.77 | 3.81 | | 14 | 2100 | 110 | 850 | 200 | 2800 | 3200 | 5.91 | 5.50 |
| | 16 | 1800 | 110 | 700 | 200 | 3200 | 3600 | 5.29 | 3.94 | | 16 | 2200 | 110 | 850 | 200 | 3200 | 3600 | 7.22 | 5.78 |
| | 18 | 1800 | 110 | 700 | 200 | 3600 | 4000 | 6.46 | 4.20 | | 18 | 2300 | 110 | 850 | 200 | 3600 | 4000 | 8.48 | 6.07 |
| 10.00 | 06 | 2100 | 120 | 850 | 200 | 1200 | 1600 | 4.00 | 6.40 | 12.50 | 06 | 2450 | 120 | 900 | 200 | 1200 | 1600 | 4.40 | 7.44 |
| | 08 | 2100 | 120 | 850 | 200 | 1600 | 2000 | 4.52 | 6.48 | | 08 | 2450 | 120 | 900 | 200 | 1600 | 2000 | 4.76 | 7.79 |
| | 10 | 2100 | 120 | 850 | 200 | 2000 | 2400 | 5.15 | 6.62 | | 10 | 2650 | 120 | 900 | 200 | 2000 | 2400 | 5.87 | 8.04 |
| | 12 | 2100 | 120 | 850 | 200 | 2400 | 2800 | 5.74 | 6.77 | | 12 | 2860 | 120 | 900 | 200 | 2400 | 2800 | 7.01 | 8.30 |
| | 14 | 2300 | 120 | 850 | 200 | 2800 | 3200 | 7.33 | 7.09 | | 14 | 3060 | 120 | 900 | 200 | 2800 | 3200 | 8.59 | 8.67 |
| | 16 | 2300 | 120 | 850 | 200 | 3200 | 3600 | 8.06 | 7.28 | | 16 | 3060 | 120 | 900 | 200 | 3200 | 3600 | 9.67 | 8.90 |
| | 18 | 2300 | 120 | 850 | 200 | 3600 | 4000 | 8.92 | 7.46 | | 16 | 3060 | 120 | 900 | 200 | 3600 | 4000 | 11.11 | 9.21 |

Note:01. Due to continuous technological improvements, dimensions are subject to change without notice.

02. All cranes conform to IS 807, IS 3177, Class 2 duty.

03. Details of cranes as per Class 3 and 4 duties could be supplied on request.

04. Dimension H1 could be further reduced by using "Short Head Room Hoists", details on request.

05. Above dimensions are for cranes having 6m lift. There may be minor variations in dimensions for higher height of lift.

Special Features:

- ★ Designs conform to IS-807, IS-3177.
- ★ Optimum Design ensuring minimum Dead Weight, Wheel Loads, Head Rooms and Clearances, reducing building costs.
- ★ Forged Runner Wheels on Spherical Roller Bearings, resulting in long trouble free service.
- ★ Hobbed and Run-In Heat Treated Gears from High Carbon & Alloy Steels for long trouble free service.
- ★ Standardised Unit Sub-Assemblies used for complete range, ensuring possibility of spares supply from stocks.
- ★ Wide range of Hoisting, Cross & Long Travel Speeds available to suit every operational requirement.
- ★ Quick Deliveries and Prompt After Sales Service.

Design:

- ★ Amply Proportioned Main Girder and End Carriages from Rolled Sections, Rolled Sections with Cover Plates or Fabricated Girder. Main Girder further stiffened with Auxiliary Girder and End-Tied to End Carriages, restricting the Equivalent Length & Compressive Stresses.
- ★ Well proportioned Rotating Axle Type Runner Wheels on "L" Type Bearing Housings on SGEOT Cranes and Fixed Axle Type Runner Wheels on US-SGEOT Cranes.
- ★ Rope Drum fabricated from IS-226, stress relieved & long seams 100% Radiographed.



EddyCranes

ENGINEERS PVT. LTD.

3/23, Tardeo Airconditioned Market,
Tardeo Road, Bombay-400 034.
Phone: 4945103/4945986
Telex: 011-75262 EDDY IN
Telefax: 022-4948707, 022-6409611.
Gram: EDDYCRANES, BOMBAY-400 050.
Works: 66/8, Block D2, MIDC Industrial Area,
Chinchwad, Pune 411019.
Telephone: 770521, 774816

Bridge Drive:

- ★ Single / Twin Drive with Squirrel Cage / Slip Ring Induction Motors through Totally Enclosed, Oil Immersed, Helical Gearboxes in case of SGEOT Cranes.
- ★ Twin Drive through "Unique" Conical Rotor type Squirrel Cage Induction Geared Motors with built-in fail safe brakes in case of US-SGEOT Cranes.
- ★ All Single Drive Units, provided with amply proportioned Line Shafting, supported on Self Aligning Bearings, housed in Plummer Blocks.

Motors:

- ★ "Unique" Conical Rotor Type Squirrel Cage Induction Hoisting Motors with built-in Brakes for Hoisting and Cross Travel. Foot Mounted, IEC Frame Size, Crane Duty Motors for Long Travel. Insulation Class for all motors B/E.

Brakes:

- ★ Built-in Electro Mechanical Brakes for Hoisting and Cross Travel Motions.
- ★ Electro Hydraulic Thrusters for Long Travel in case of SGEOT Cranes and built-in Electro Mechanical Brakes in case of US-SGEOT Cranes.

Crane Control:

- ★ From Floor through Pendant Push Buttons, operating at 110/24 V. Electrical Switch Gears mounted inside a dust proof Control Panel, with suitable access for maintenance.

Power Supply System:

- ★ To Hoist & Cross Travel through Trailing Cables. To crane through Trailing Cable / M.S. Angle Iron Conductors/bare Copper Conductors to customer's choice.

Other Products:

- ★ Electric Hoists.
- ★ SG EOT/US SG EOT Cranes classes 3, 4.
- ★ Steel Mill / Grabbing duty Cranes
- ★ Grabs & Grapples.
- ★ HOT Single Girder Cranes.
- ★ Double Girder HOT / EOT / Goliath Cranes classes 1-4
- ★ Lifting Beams & Tongs
- ★ Electrical Winches
- ★ Jib Cranes, Pillar & Wall Mounted.
- ★ Bracket Cranes.
- ★ Consultancy for Material Handling.